



FOR LEASE OR REDEVELOPMENT

7300 Wornall Road, Kansas City, Missouri



FOR LEASE OR REDEVELOPMENT

3,420 SF FREESTANDING BUILDING

DEMOGRAPHICS

	1 mile	3 miles	5 miles
Estimated Population	14,567	97,685	242,017
Avg. Household Income	\$129,412	\$124,815	\$96,085

- 3,420 SF Building on .58 Acres
- Property For Lease or Redevelopment
- Rare Wornall Road redevelopment opportunity
- Former QuikTrip location
- Great access
- Wornall Road carries over 18,000 cars per day



CLICK HERE TO VIEW MORE LISTING INFORMATION

For More Information Contact:

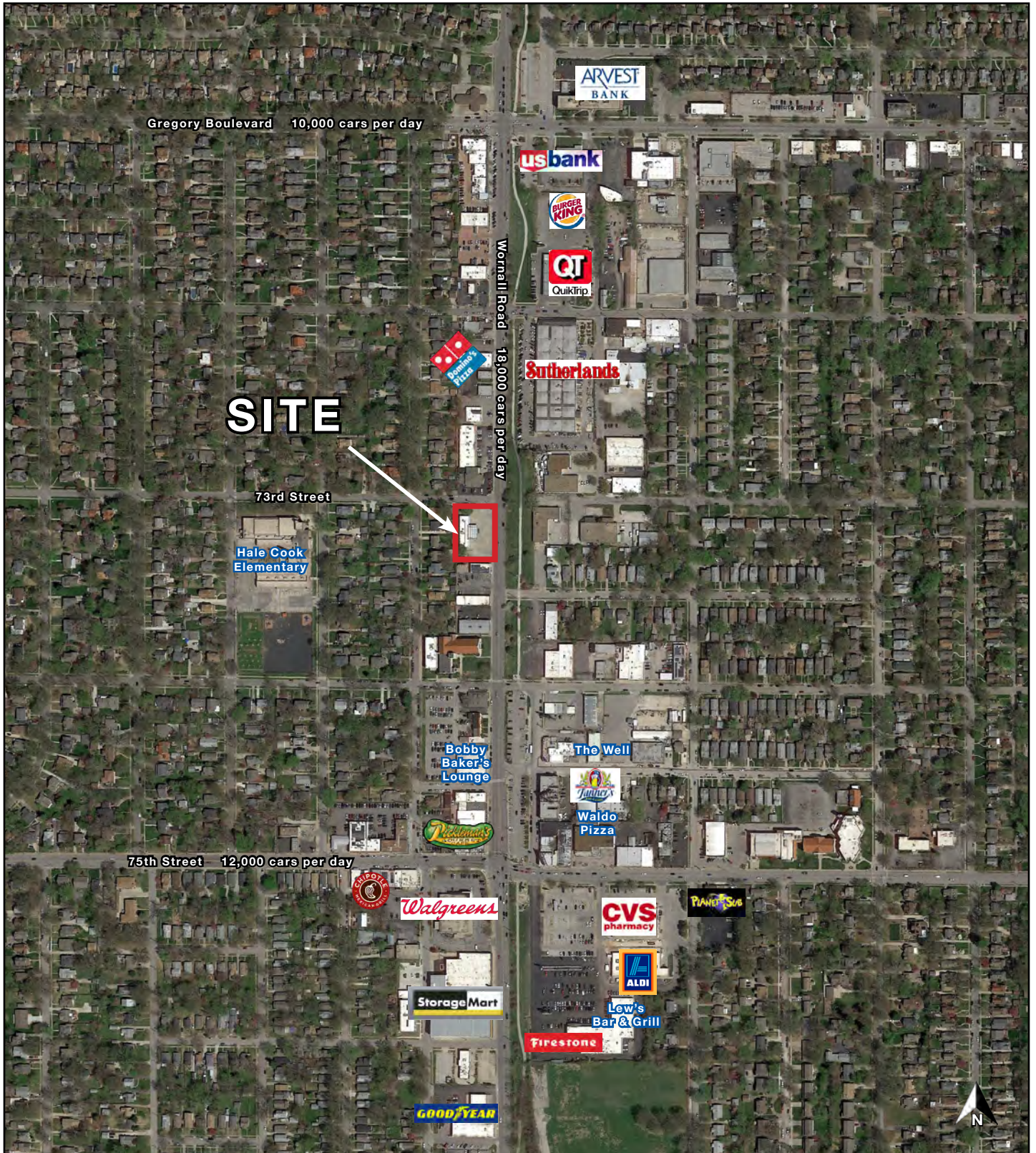
Exclusive Agents

DAVID BLOCK | 816.412.7400 | dblock@blockandco.com

PHIL PECK, CCIM | 816.412.7364 | ppeck@blockandco.com



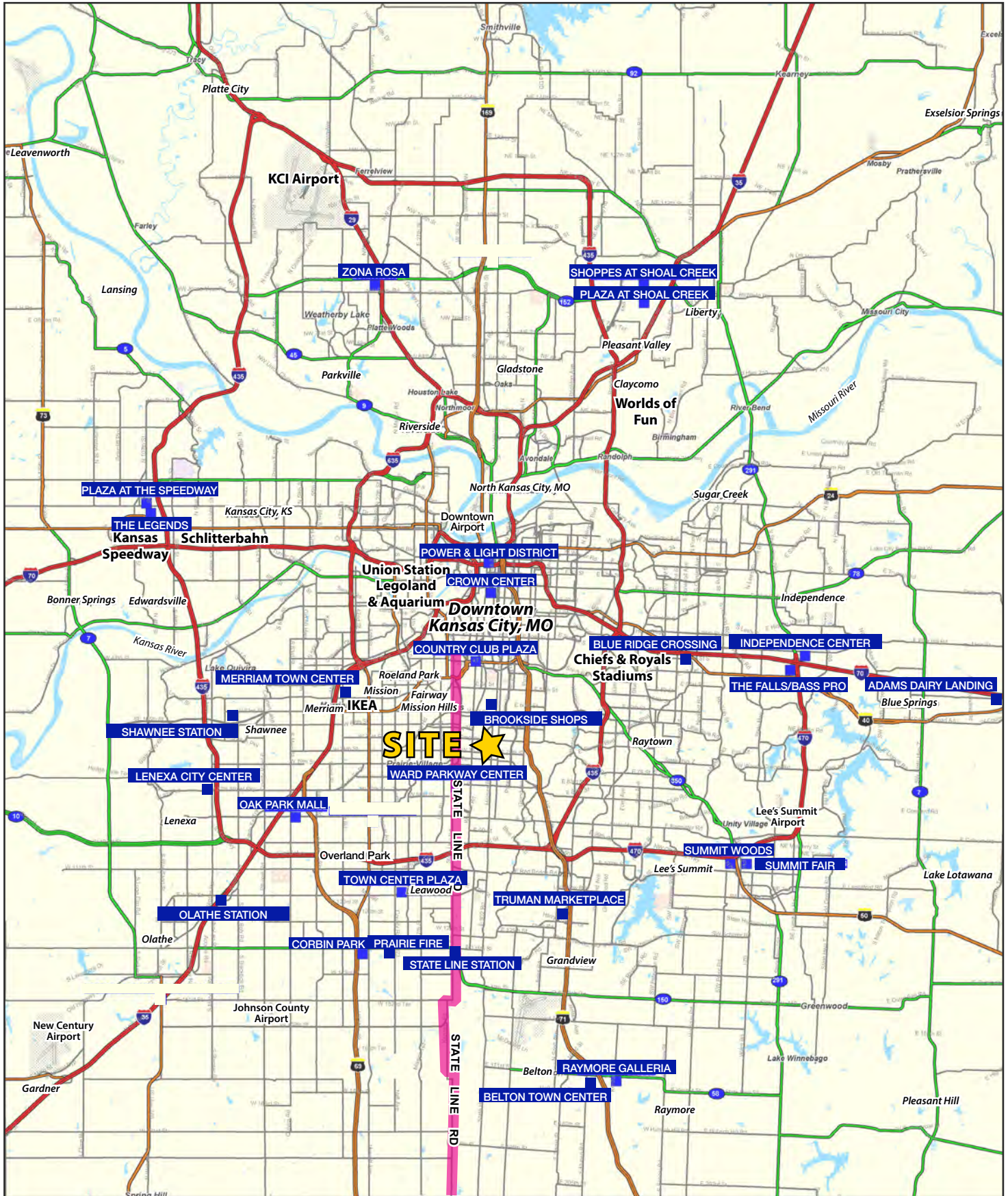
AERIAL

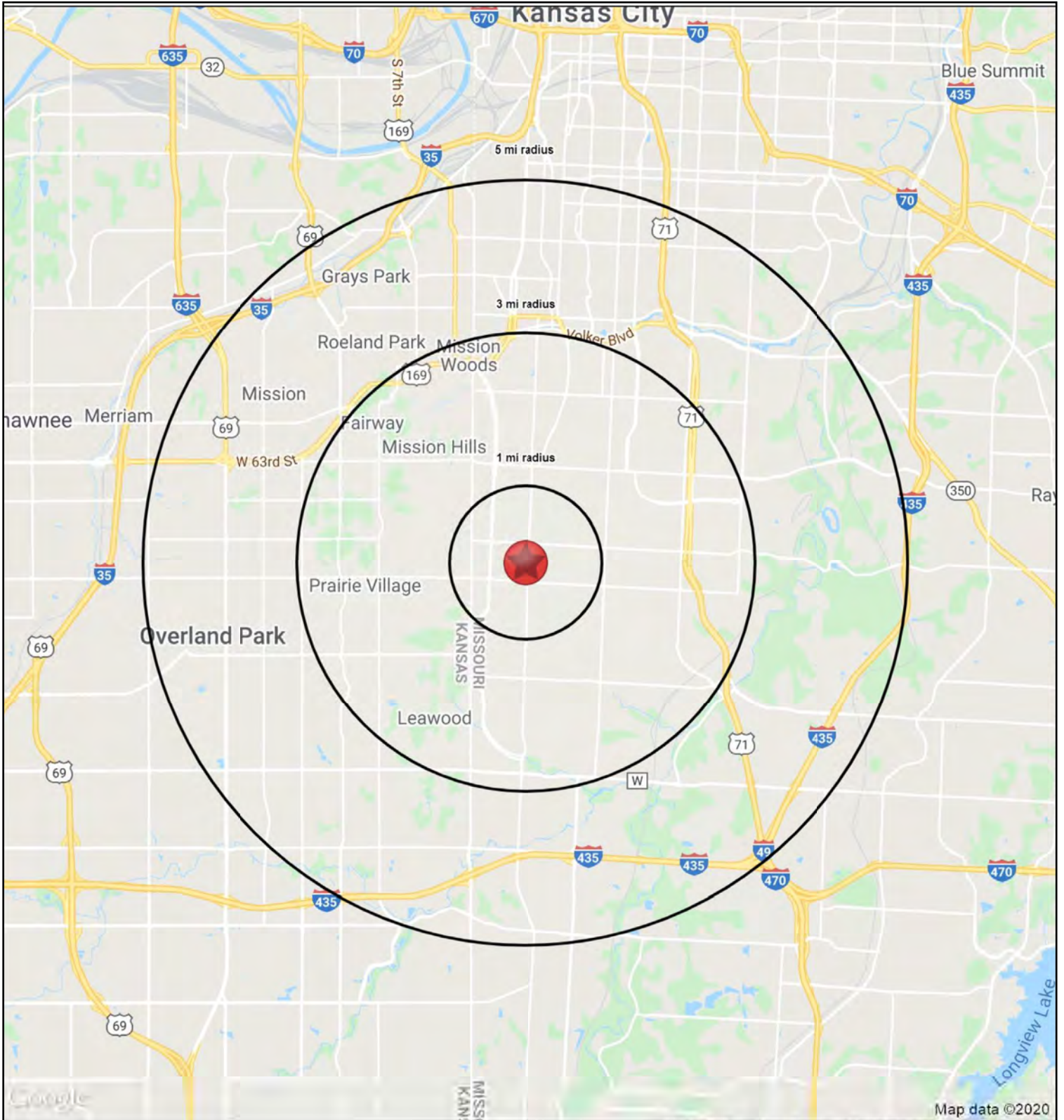




FOR LEASE OR REDEVELOPMENT

7300 Wornall Road, Kansas City, Missouri







FOR LEASE OR REDEVELOPMENT

7300 Wornall Road, Kansas City, Missouri

7300 Wornall Road		1 mi radius	3 mi radius	5 mi radius
Kansas City, MO 64114				
POPULATION	2020 Estimated Population	14,567	97,685	242,017
	2025 Projected Population	14,718	100,564	252,319
	2010 Census Population	14,949	96,424	232,579
	2000 Census Population	15,233	102,655	251,261
	Projected Annual Growth 2020 to 2025	0.2%	0.6%	0.9%
	Historical Annual Growth 2000 to 2020	-0.2%	-0.2%	-0.2%
	2020 Median Age	38.3	39.6	39.0
HOUSEHOLDS	2020 Estimated Households	7,231	44,574	117,264
	2025 Projected Households	7,194	45,411	120,845
	2010 Census Households	7,057	41,993	107,406
	2000 Census Households	7,134	44,093	114,165
	Projected Annual Growth 2020 to 2025	-0.1%	0.4%	0.6%
	Historical Annual Growth 2000 to 2020	-	-	0.1%
RACE AND ETHNICITY	2020 Estimated White	86.3%	66.3%	65.3%
	2020 Estimated Black or African American	7.7%	27.6%	25.3%
	2020 Estimated Asian or Pacific Islander	1.9%	2.1%	3.0%
	2020 Estimated American Indian or Native Alaskan	0.4%	0.3%	0.4%
	2020 Estimated Other Races	3.8%	3.7%	6.1%
	2020 Estimated Hispanic	5.0%	4.0%	7.9%
INCOME	2020 Estimated Average Household Income	\$129,412	\$124,815	\$96,085
	2020 Estimated Median Household Income	\$96,574	\$86,509	\$70,778
	2020 Estimated Per Capita Income	\$64,275	\$57,050	\$46,644
EDUCATION (AGE 25+)	2020 Estimated Elementary (Grade Level 0 to 8)	0.8%	1.1%	1.6%
	2020 Estimated Some High School (Grade Level 9 to 11)	1.6%	4.1%	4.5%
	2020 Estimated High School Graduate	10.7%	16.5%	18.1%
	2020 Estimated Some College	15.4%	17.8%	19.1%
	2020 Estimated Associates Degree Only	5.0%	5.4%	6.2%
	2020 Estimated Bachelors Degree Only	38.8%	31.7%	29.7%
	2020 Estimated Graduate Degree	27.7%	23.4%	20.7%
BUSINESS	2020 Estimated Total Businesses	633	4,001	13,455
	2020 Estimated Total Employees	4,992	44,355	157,158
	2020 Estimated Employee Population per Business	7.9	11.1	11.7
	2020 Estimated Residential Population per Business	23.0	24.4	18.0

